

# Dead to Sin, Alive to God in Christ Jesus

Romans 6:1-11 (NASB)

Aaron Abrahamson Cote

**A**

A $\flat$

E $\flat$

Fmin

B $\flat$



What shall we say \_\_\_\_ then? Are we to con - tin-ue to sin so that grace \_\_\_\_ may in - crease?

5

A $\flat$

E $\flat$

Fmin

B $\flat$



May it nev - er be! \_\_\_\_ How shall we who died to sin \_\_\_\_ still live in it? Or

9

Gmin

A $\flat$



do you not know that all \_\_\_\_ of us \_\_\_\_ who have been bap - tized in to \_\_\_\_

12

A $\flat$

E $\flat$

B $\flat$



Christ Je - sus \_\_\_\_ have been bap - tized in - to His death? There-fore we have been

**B**

A $\flat$

(Echo)

E $\flat$



bur-ied with Him (bur-ied with Him) through bap - ti-sm in-to death, (through bap - ti-sm in-to death) so that as

19

Gmin

Cmin

A $\flat$

B $\flat$



Christ was raised from the dead \_\_\_\_ through the glo - ry of \_\_\_\_ the Fa - ther,

23

Fmin

A $\flat$

E $\flat$



so we too might walk in new-ness of life. \_\_\_\_ For if we have be-come un-

Music © 2020 by Aaron Abrahamson Cote  
www.SongsOfScripture.org

Scripture taken from the NEW AMERICAN STANDARD BIBLE®,  
© Copyright 1960, 1962, 1963, 1968, 1971, 1972, 1973, 1975, 1977, 1995  
by The Lockman Foundation. Used by permission. www.Lockman.org

# Dead to Sin, Alive to God in Christ Jesus (2 of 3)

**C**

A $\flat$

E $\flat$



31

B $\flat$

Cmin

A $\flat$

B $\flat$



**D**

Gmin

Cmin

E $\flat$



39

B $\flat$

A $\flat$

E $\flat$



42

A $\flat$

B $\flat$



**E**

E $\flat$

Cmin

Fmin

E $\flat$

Cmin

B $\flat$

E $\flat$



48

F

Dmin

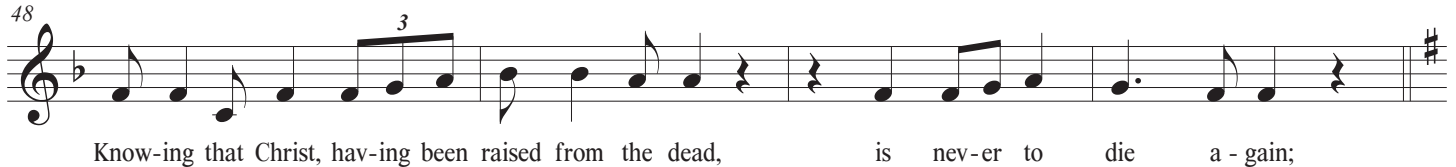
Gmin

F

Dmin

C

F



52

G

C

G

D

G



# Dead to Sin, Alive to God in Christ Jesus (3 of 3)

**F**

C D G C6 G D Emin G/D



death that He died, He died to sin once for all; but the



life that He lives, He lives to God. E - ven



so con-sid-er your-selves \_\_\_\_ to be dead to sin, but a - live to God in Christ



Je - sus. E - ven so con-sid-er your-selves \_\_\_\_ to be



dead to sin, but a - live to God in Christ Je - sus!